



PERCY PLACE
ballsbridge D4

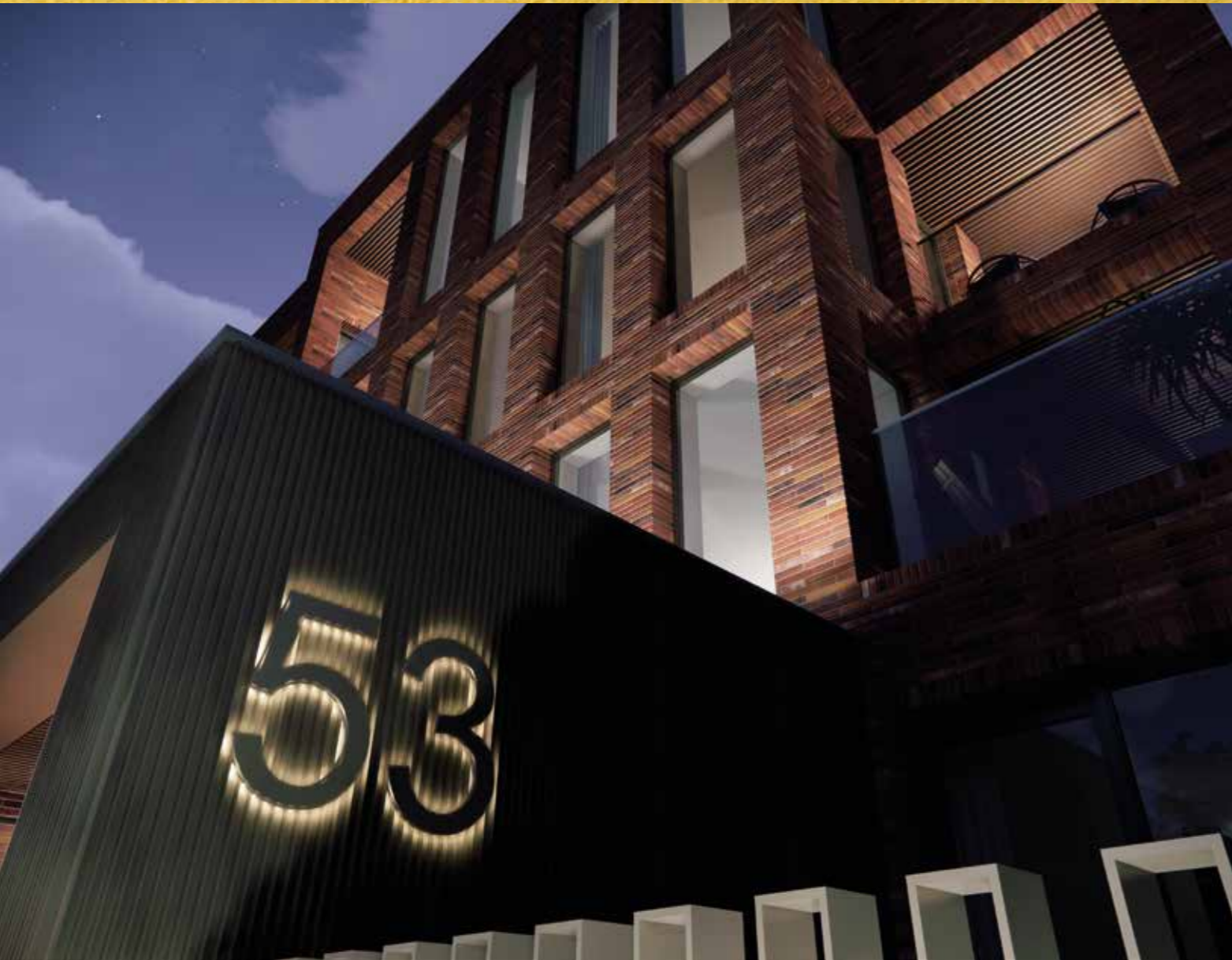




PERCY PLACE
ballsbridge D4



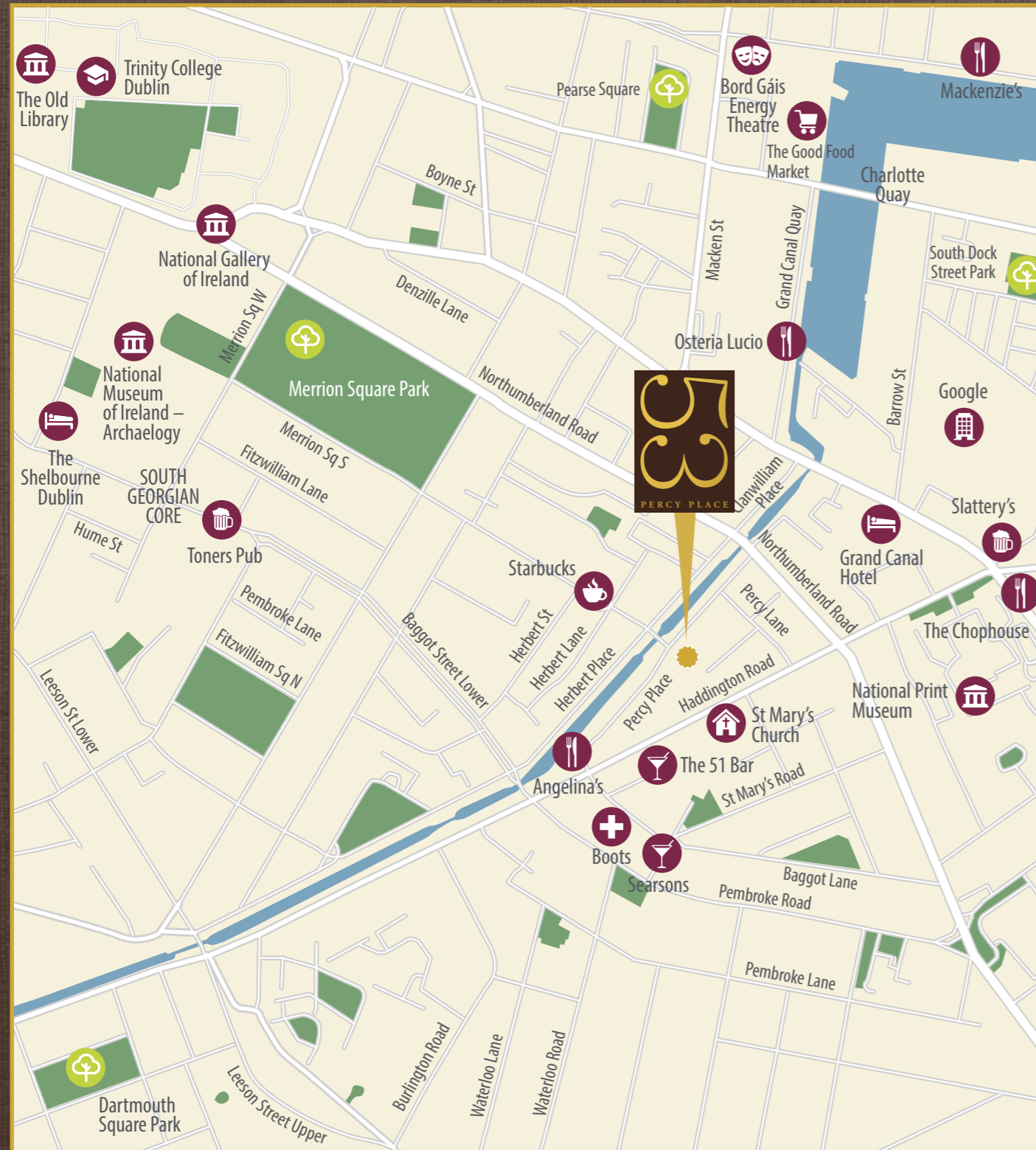
PERCY PLACE
ballsbridge D4



PERCY PLACE
ballsbridge D4

PERCY PLACE...

– Perfectly placed at the business end of things



...PERFECTLY PLACED

– Commute on foot



BUSINESS

LinkedIn Ireland	0.6 km
Google EMEA HQ	0.7 km
Twitter EMEA HQ	1.0 km
US Embassy	1.2 km
Facebook HQ	1.2 km
Indeed International HQ	1.6 km
IFSC	2.0 km
Central Bank of Ireland	2.0 km
Yahoo EMEA HQ	2.4 km

RESTAURANTS

Angelina's	0.2 km
Osteria Lucio	0.6 km
The Garden Room	1.0 km
Ely Place	1.1 km
Restaurant Patrick Guilbaud (2 star Michelin)	1.0 km
Dax	1.2 km
Roly's Bistro	1.2 km
Avoca Food Market	1.3 km
Delahunt	1.9 km
Trocadero	1.8 km
Neo	2.0 km
Lock's Restaurant	2.2 km

Barrow Street DART	0.7 km
Bord Gais Energy Theatre	1.1 km
Aviva Stadium	1.3 km
3Arena	2.1 km



PERCY PLACE
ballsbridge D4

Quality design with crafted inspired interiors.
An exciting new place to live, work, invest.



KITCHEN

- Sleek, uncluttered luxury kitchens in light and dark colour palettes
- Granite or stone worktops
- Technologically advanced integrated appliances
- LED ceiling and under unit lighting
- Statement taps and under mounted sinks

BATHROOM & ENSUITE

- Elegant and sleek sanitary ware
- Countertop mounted wash hand basins with wall mounted mixer taps
- Console standing wash hand basin in ensuite
- Wall mounted WC
- Rectangular bath with wall mounted taps, shower valve and black framed shower screen
- Large shower tray with rain drench shower head and black framed sliding doors

DECORATION

- Linen effect wallpaper
- White oak full height solid core internal doors
- White oak door edge trims
- Black Karcher lever handles
- Full height wardrobe doors with concealed handles



PERCY PLACE
ballsbridge D4



FLOORING

- Engineered timber flooring in entrance hall, bedrooms, living and kitchen in a selection of board widths and finishes – Polar Oak, Chalked Oak or Arctic Oak
- Coverlam Grespania flooring and wall tiles in bathroom and ensuite

ELECTRICAL

- Intra Dual Colour wall lighting
- Intra Cove ceiling lighting
- USB charging sockets

EXTERIOR

- Vehicle lift to secure underground designated car parking
- Bicycle docks
- Designated secure lock-up stores in basement



PERCY PLACE
ballsbridge D4



Secure Underground Parking

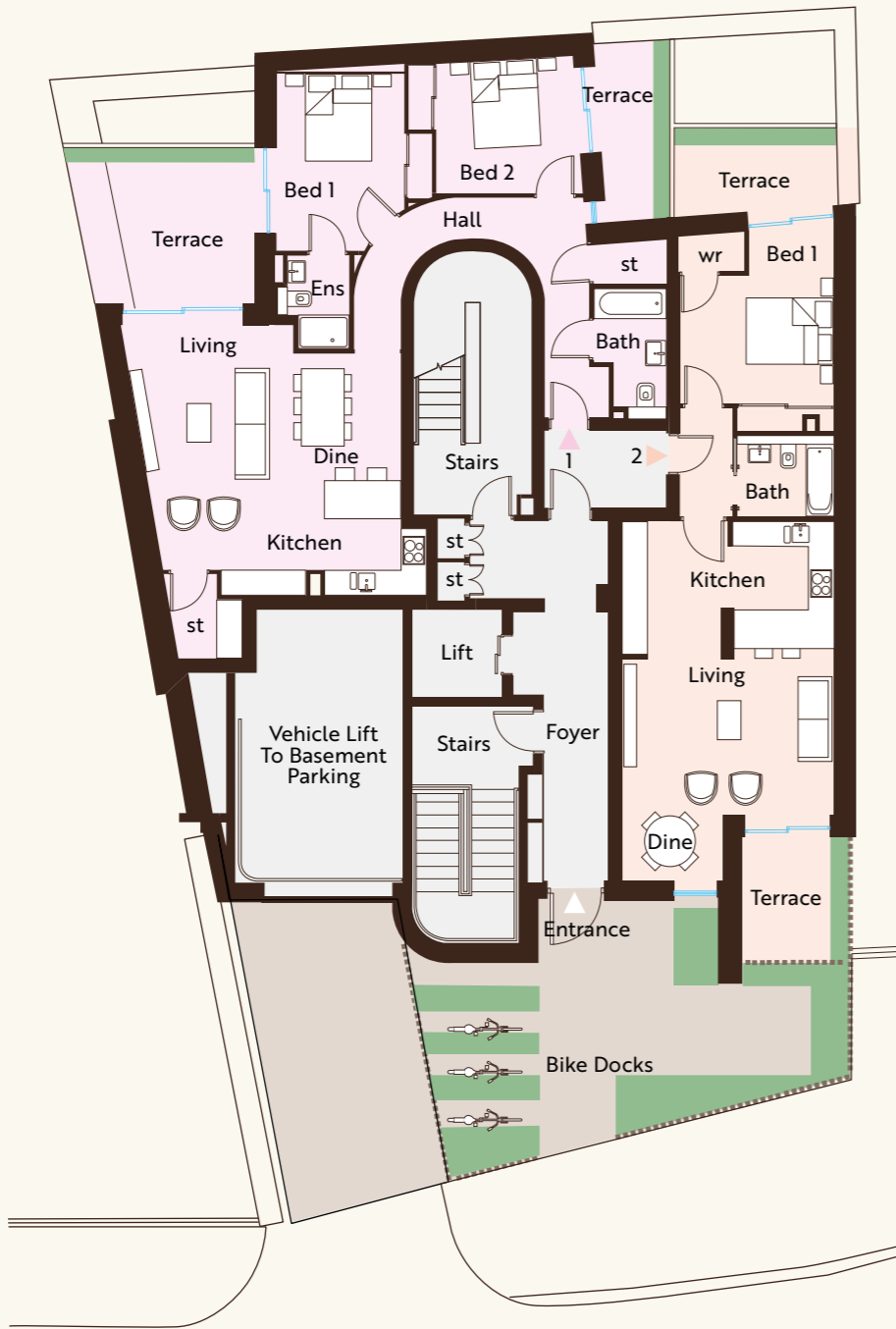


PERCY PLACE
ballsbridge D4

Ground Floor Plans

Apartment One

Internal area: 998 sq ft
 Rear terrace area: 142 sq ft
 Bed 2 terrace area: 73 sq ft

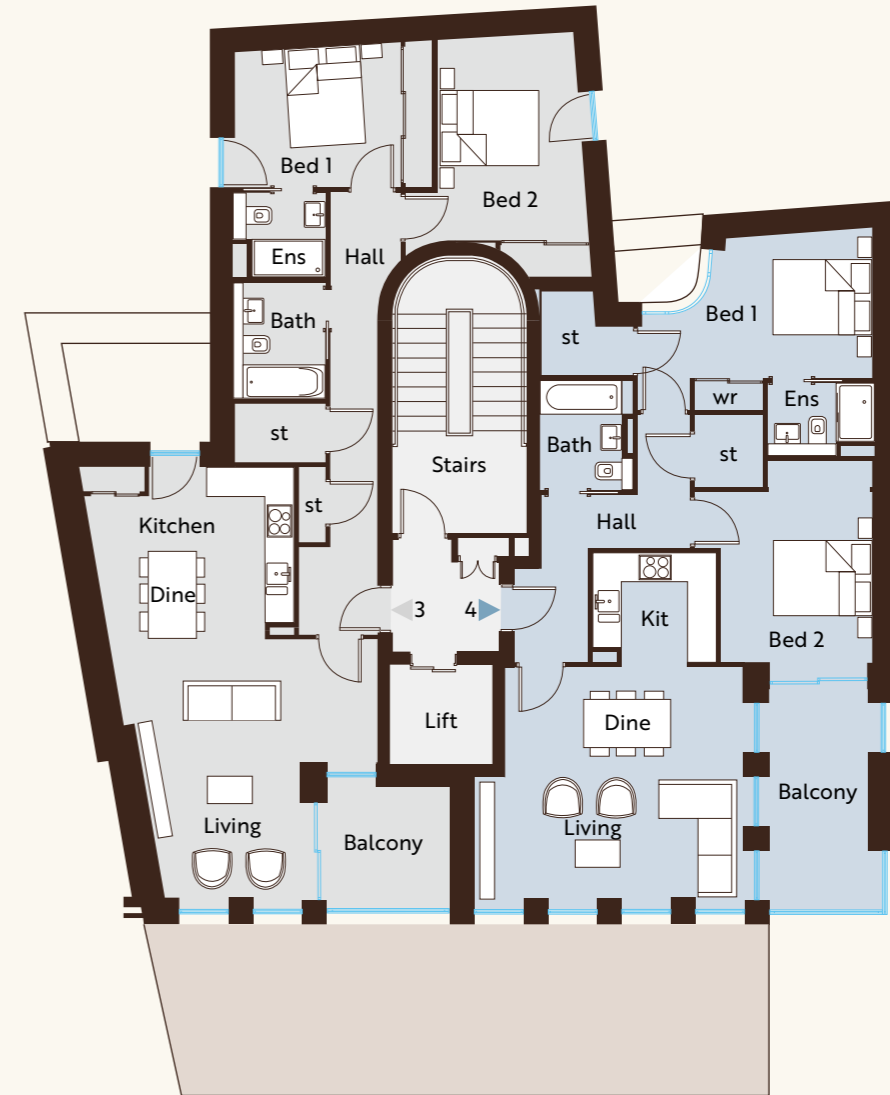


Apartment Two

Internal area: 696 sq ft
 Rear terrace area: 67 sq ft
 Front terrace area: 68 sq ft

Apartment Three

Internal area: 963 sq ft
 Balcony: 74 sq ft



Apartment Four

Internal area: 910 sq ft
 Balcony: 118 sq ft

First Floor Plans

APARTMENT ONE	Entrance Hall
	Living Dine Kitchen
	ft 20'8" x 18'10" m 6.33 x 5.75
	Bedroom 1
	ft 13'7" x 9'10" m 4.15 x 3.00
	Ensuite
	ft 7'2" x 4'9" m 2.18 x 1.40
Bedroom 2	
ft 12'3" x 10'2" m 3.73 x 3.10	
Bathroom	
ft 8'2" x 5'6" m 2.48 x 1.70	

APARTMENT TWO	Entrance Hall
	Living Dine Kitchen
	ft 27'6" x 16'3" m 8.40 x 4.97
	Bedroom 1
	ft 13'5" x 11'9" m 4.10 x 3.62
Bathroom	
ft 7'5" x 6'3" m 2.27 x 1.90	

APARTMENT THREE	Entrance Hall
	Living Dine Kitchen
	ft 29'1" x 15'5" m 8.85 x 4.72
	Bedroom 1
	ft 11'2" x 9'8" m 3.40 x 2.97
	Ensuite
	ft 6'2" x 5'7" m 1.88 x 1.74
Bedroom 2	
ft 12'4" x 11'5" m 3.77 x 3.49	
Bathroom	
ft 7'8" x 6'2" m 2.37 x 1.88	

APARTMENT FOUR	Entrance Hall
	Living Dine Kitchen
	ft 23'3" x 18'1" m 7.08 x 5.50
	Bedroom 1
	ft 11'5" x 10'2" m 3.50 x 3.10
	Ensuite
	ft 7'4" x 4'10" m 2.24 x 1.50
Bedroom 2	
ft 12'3" x 10'2" m 3.74 x 3.09	
Bathroom	
ft 7'4" x 6'4" m 2.25 x 1.93	

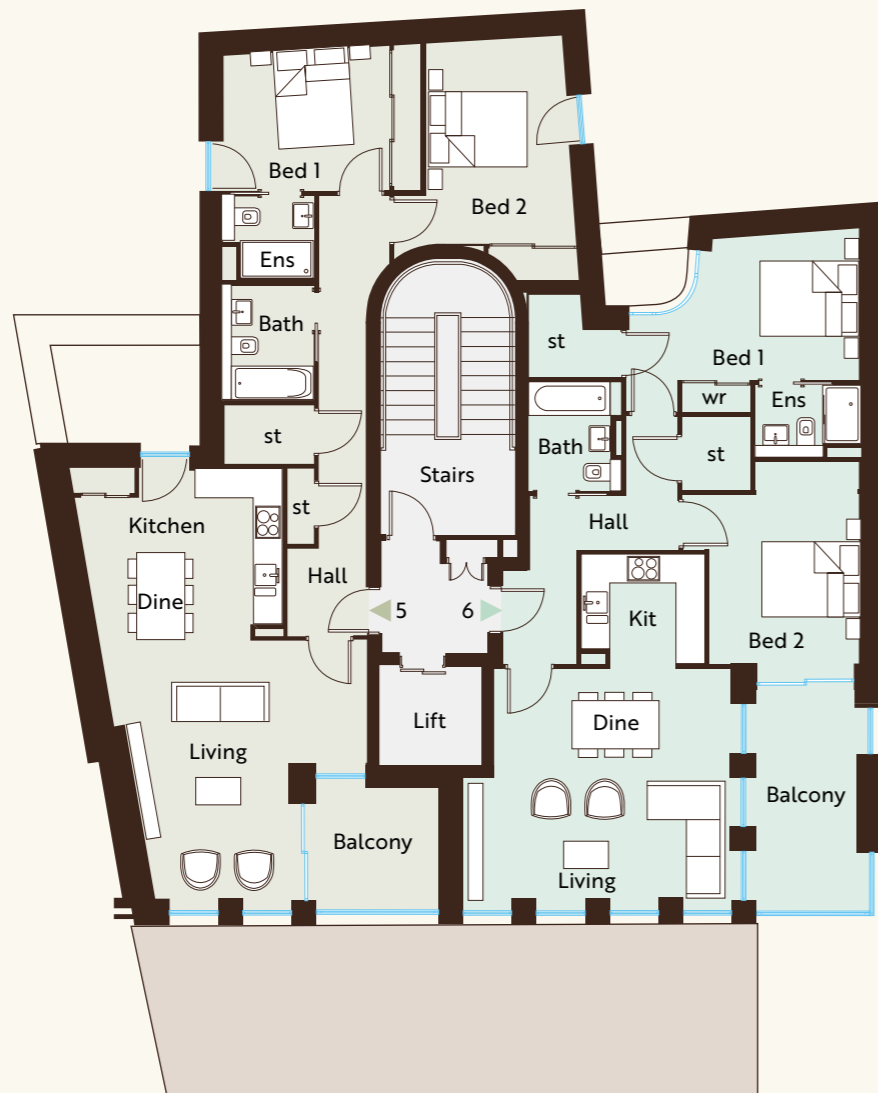


PERCY PLACE
 ballsbridge D4

Second Floor Plans

Apartment Five

Internal area: 963 sq ft
Balcony: 74 sq ft



Apartment Six

Internal area: 910 sq ft
Balcony: 118 sq ft

Apartment Seven

Internal area: 963 sq ft
Balcony: 74 sq ft

Apartment Eight

Internal area: 910 sq ft
Balcony: 118 sq ft



Third Floor Plans

APARTMENT FIVE	Entrance Hall
	Living Dine Kitchen
	ft 29'1" x 15'5" m 8.85 x 4.72
	Bedroom 1
	ft 11'2" x 9'8" m 3.40 x 2.97
	Ensuite
	ft 6'2" x 5'7" m 1.88 x 1.74
Bedroom 2	
ft 12'4" x 11'5" m 3.77 x 3.49	
Bathroom	
ft 7'8" x 6'2" m 2.37 x 1.88	

APARTMENT SIX	Entrance Hall
	Living Dine Kitchen
	ft 23'3" x 18'1" m 7.08 x 5.50
	Bedroom 1
	ft 11'5" x 10'2" m 3.50 x 3.10
	Ensuite
	ft 7'4" x 4'10" m 2.24 x 1.50
Bedroom 2	
ft 12'3" x 10'2" m 3.74 x 3.09	
Bathroom	
ft 7'4" x 6'4" m 2.25 x 1.93	

APARTMENT SEVEN	Entrance Hall
	Living Dine Kitchen
	ft 29'1" x 15'5" m 8.85 x 4.72
	Bedroom 1
	ft 11'2" x 9'8" m 3.40 x 2.97
	Ensuite
	ft 6'2" x 5'7" m 1.88 x 1.74
Bedroom 2	
ft 12'4" x 11'5" m 3.77 x 3.49	
Bathroom	
ft 7'8" x 6'2" m 2.37 x 1.88	

APARTMENT EIGHT	Entrance Hall
	Living Dine Kitchen
	ft 23'3" x 18'1" m 7.08 x 5.50
	Bedroom 1
	ft 11'5" x 10'2" m 3.50 x 3.10
	Ensuite
	ft 7'4" x 4'10" m 2.24 x 1.50
Bedroom 2	
ft 12'3" x 10'2" m 3.74 x 3.09	
Bathroom	
ft 7'4" x 6'4" m 2.25 x 1.93	



PERCY PLACE
ballsbridge D4



PERCY PLACE
ballsbridge D4

DEVELOPER



www.carrickreagh.com

These particulars do not constitute any part of an offer or contract. None of the statements contained in these particulars are to be relied on as statements or representations of fact and intending purchasers must satisfy themselves by inspection or otherwise as to the correctness of each of the statements contained in these particulars. All measurements of area are quoted as Net Sales Area which is calculated in accordance with the RICS Code of Measuring Practice (6th Edition) APP21. Configures of kitchens, bathrooms and wardrobes may be subject to alteration from those illustrated without prior notification. Purchasers should satisfy themselves as to the current specification at the time of booking.

B L O C K
creative property marketing

The Vendor does not make or give, and neither the Selling Agent, nor any person in their employment, has any authority to make or give any representation or warranty whatever in relation to any property. Artist's impressions and internal photographs are for illustration only. Plans are not to scale and all dimensions shown are approximate E. & O. E.